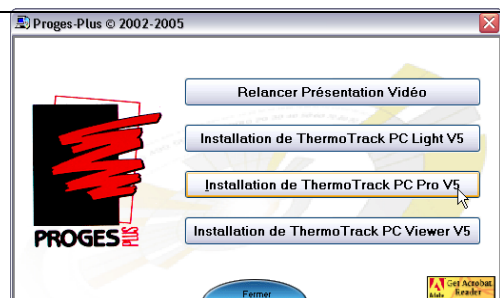


# INSTALLATION OF THERMO TRACK PC

## Important notice before you start:

- 1) If you have a USB adapter do NOT plug it now. Wait until the program tells you to plug it.
- 2) If you are using Windows NT, 2000 or XP, check that you are administrator of the computer. If you are not administrator, the program will not install properly

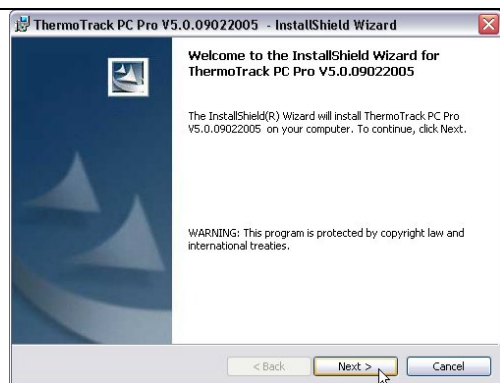
Start first by choosing the program that you have bought



The following window will appear



Press « Next »



Read the license agreement and choose « I accept ... » then « Next ».  
If you don't accept, you can't install



Enter your name and the one of your organization, then press « Next »



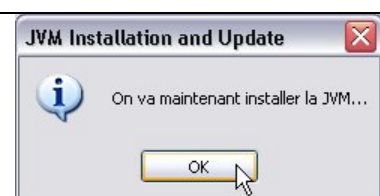
Select « Complete » and press « Next »



Now click on « Install »



Your PC might need to install an additional Microsoft program called JVM. In that case, you get this message. Click OK. You will need to restart your computer after the installation.



If your JVM is up to date, you get this message. Click « OK »



**Very important:**

If you have plugged your USB adapter, unplug it now.



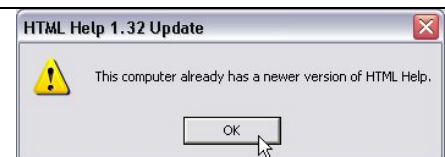
Now you can plug your USB adapter. If you have a serial or parallel adapter, you can also plug it now.



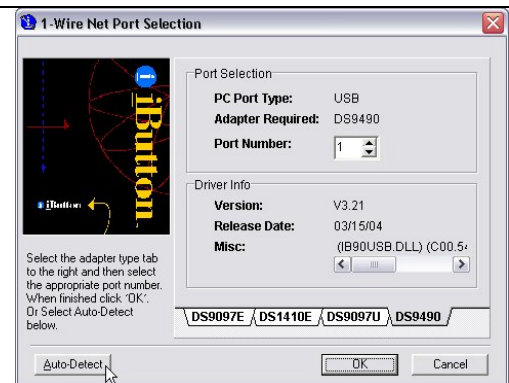
If you are using a Palm PDA, you need to close Palm Desktop and the Hot Synch manager now. On done, click on « OK »



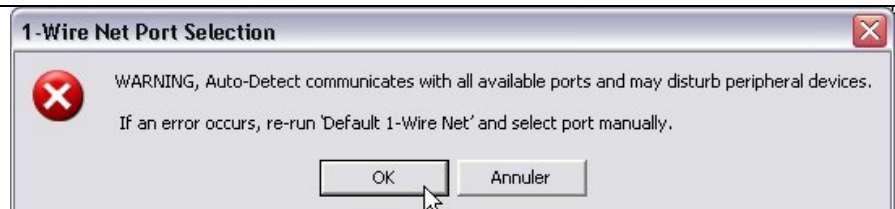
Now click on « OK »



Important:  
Press now the « Auto Detect » button on the left.



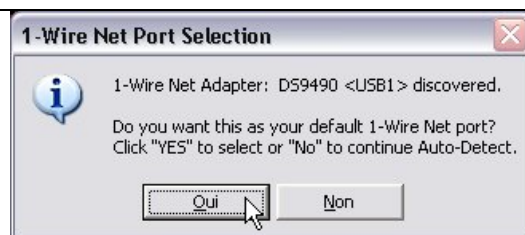
Click on « OK »



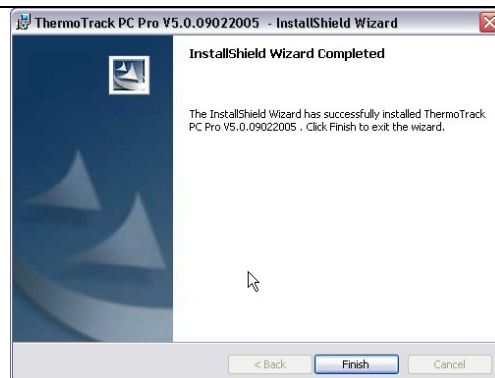
Wait while « Auto Detect » progress



Once « Auto Detect » has found the adapter and its port, this window appears. Click on « Yes »



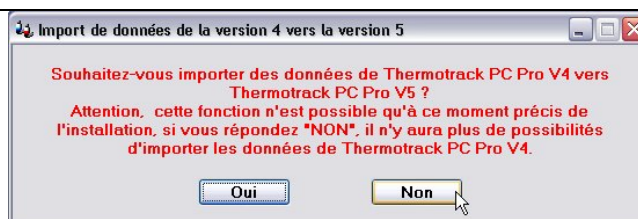
The installation is now complete. Click on « Finish »



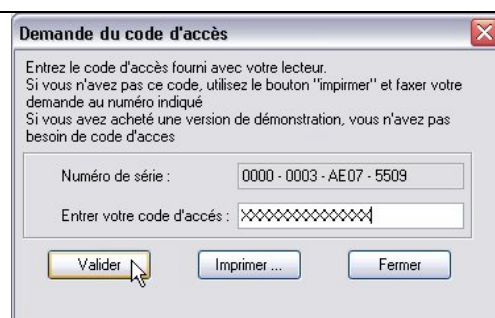
Choose your language



If you are using Thermo Track for the first time, press « no ».  
If you have used version 4 and wish to import data, press « yes »



Enter your access code. It has been sent with your adapter. Then press « OK »



The full version is now activated



You can now change the place where you want to save your data



You are now ready!

Start first by reading the help which you can open now with the right button or anytime with the F1 key

